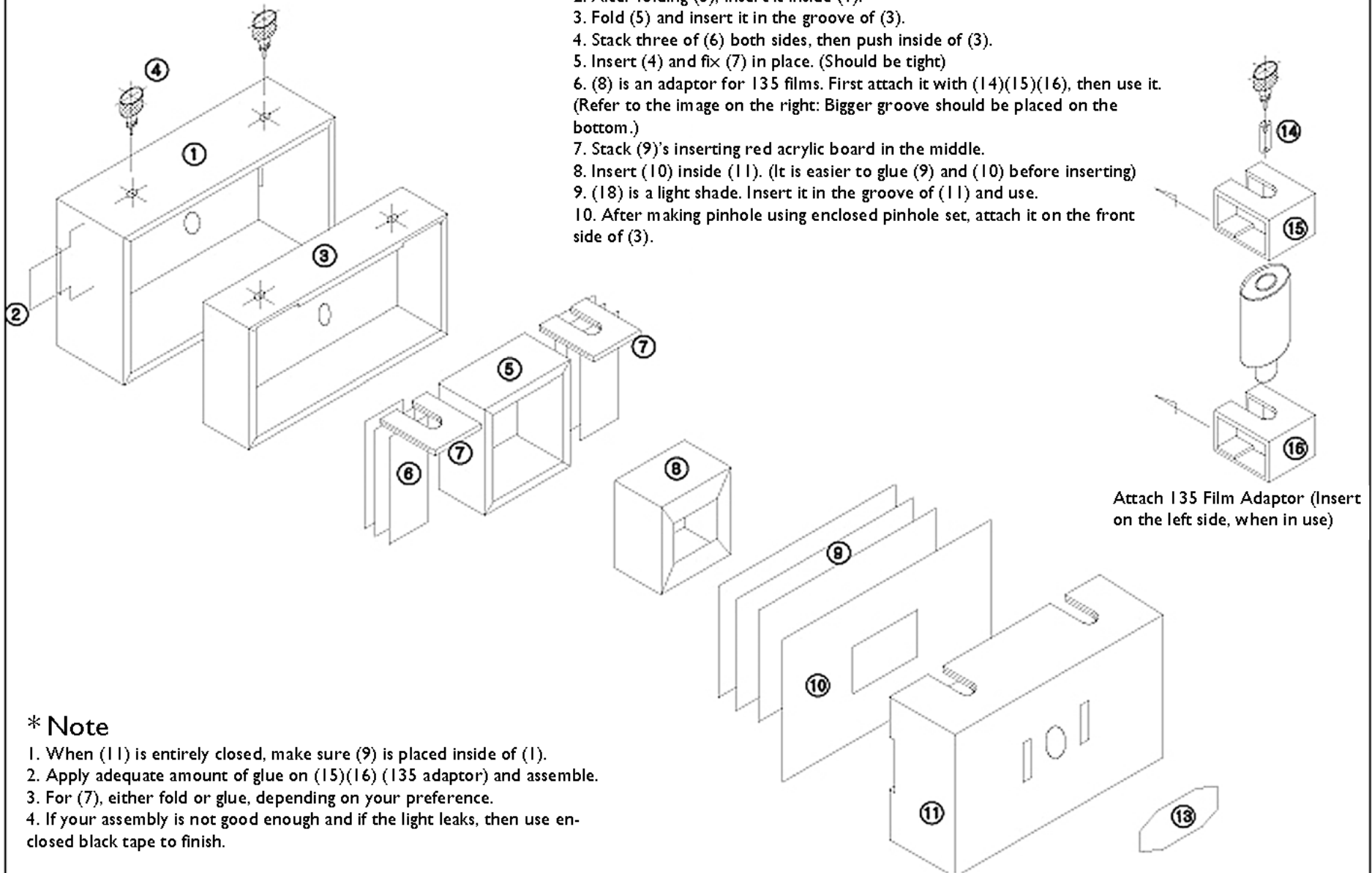


PinholeArt-Combo

*Assembly Order

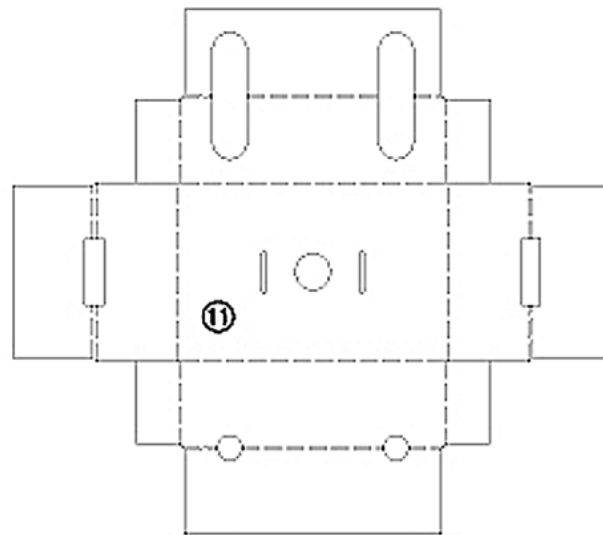
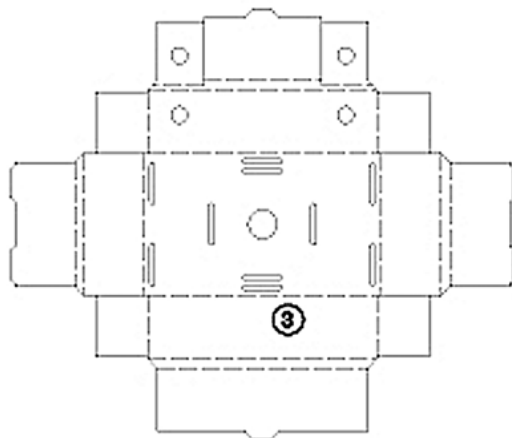
1. First, fold and make (1), then assemble (2)(shutter) together.
2. After folding (3), insert it inside (1).
3. Fold (5) and insert it in the groove of (3).
4. Stack three of (6) both sides, then push inside of (3).
5. Insert (4) and fix (7) in place. (Should be tight)
6. (8) is an adaptor for 135 films. First attach it with (14)(15)(16), then use it. (Refer to the image on the right: Bigger groove should be placed on the bottom.)
7. Stack (9)'s inserting red acrylic board in the middle.
8. Insert (10) inside (11). (It is easier to glue (9) and (10) before inserting)
9. (18) is a light shade. Insert it in the groove of (11) and use.
10. After making pinhole using enclosed pinhole set, attach it on the front side of (3).



* Note

1. When (11) is entirely closed, make sure (9) is placed inside of (1).
2. Apply adequate amount of glue on (15)(16) (135 adaptor) and assemble.
3. For (7), either fold or glue, depending on your preference.
4. If your assembly is not good enough and if the light leaks, then use enclosed black tape to finish.

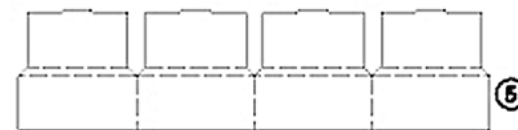
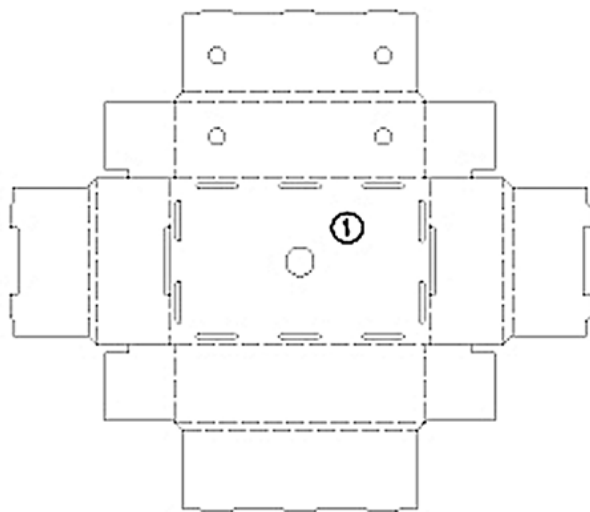
* Reference Diagram for Assembly



6



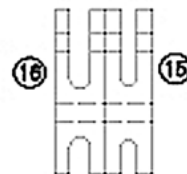
10



5

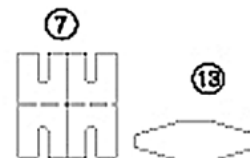


8



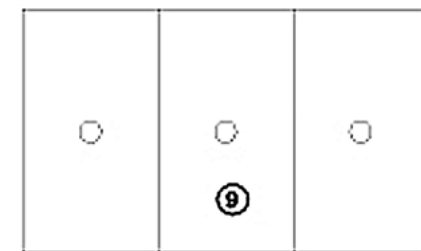
15

15



7

13



9